



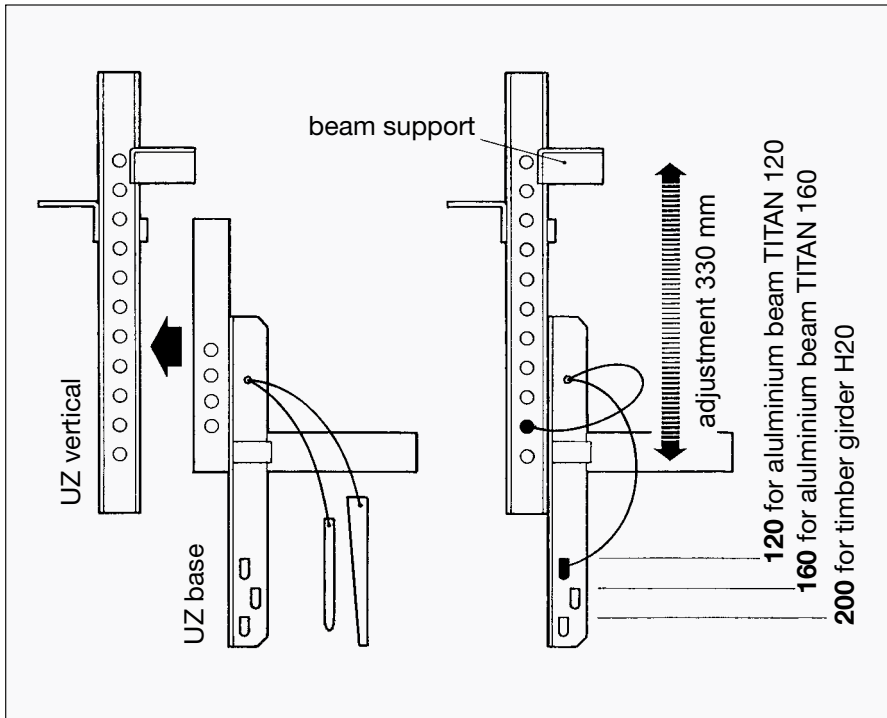
## **TITAN** UZ Beam Form

for a variety of concrete beam sizes

Advantages:

- for varying widths
- easy handling
- no anchoring through the concrete beam required





### TITAN UZ Beam Form with Aluminium Beam TITAN 120

With the TITAN UZ Beam Form concrete beams, steps in slab levels and slab edges can be catered for. The assembling is fast, because the alignment of the TITAN UZ is done inevitably by aligning the formwork beams. Fix the unit on the secondary beams and lock them with the captive wedge.

The TITAN UZ is made of durable galvanized steel and is an excellent solution especially when used with aluminium beams TITAN 120 and 160 as well as square timber 8/12 and 8/16. Anchoring through the concrete beam is not required. The reinforcement can be installed as usual.



Min. height 350 mm\*

Max. height 800 mm\*

\*(can be reduced by laying additional beams at the bottom of the beam form)

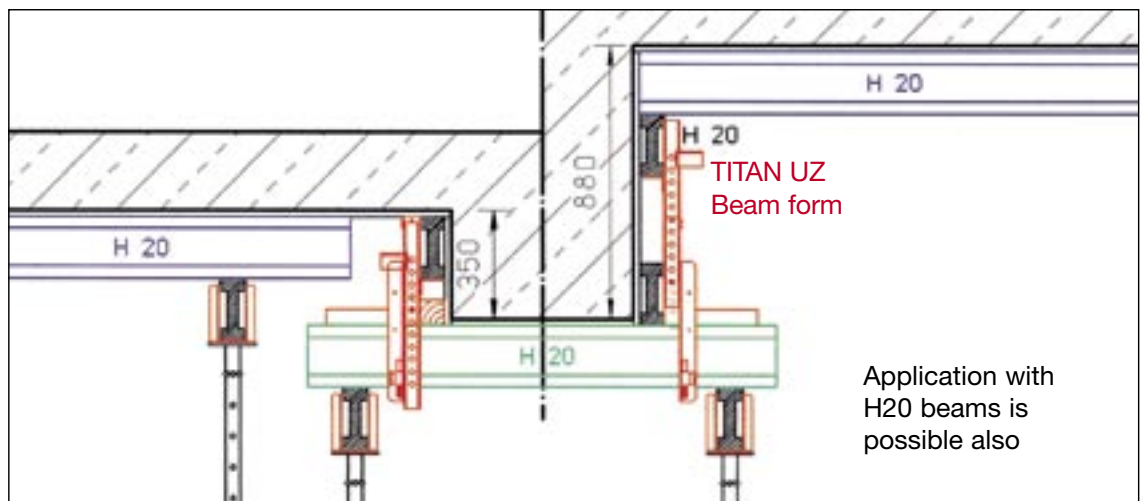
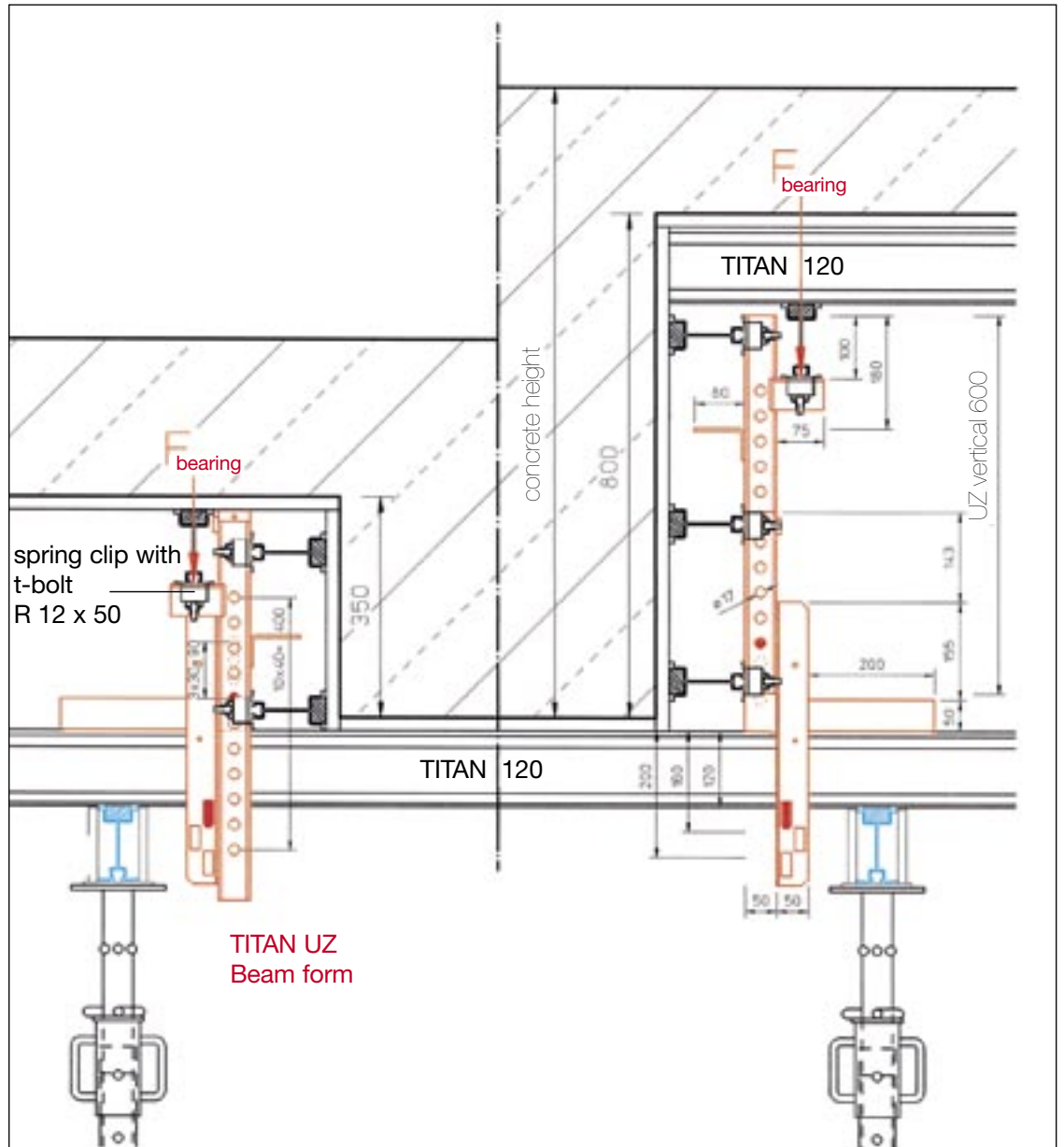
Adjustment in 10 mm steps  
Max force on beam support  
 $F_{\text{bearing}} = \text{max. } 5 \text{ kN}$

#### permissible spacing (without anchoring)

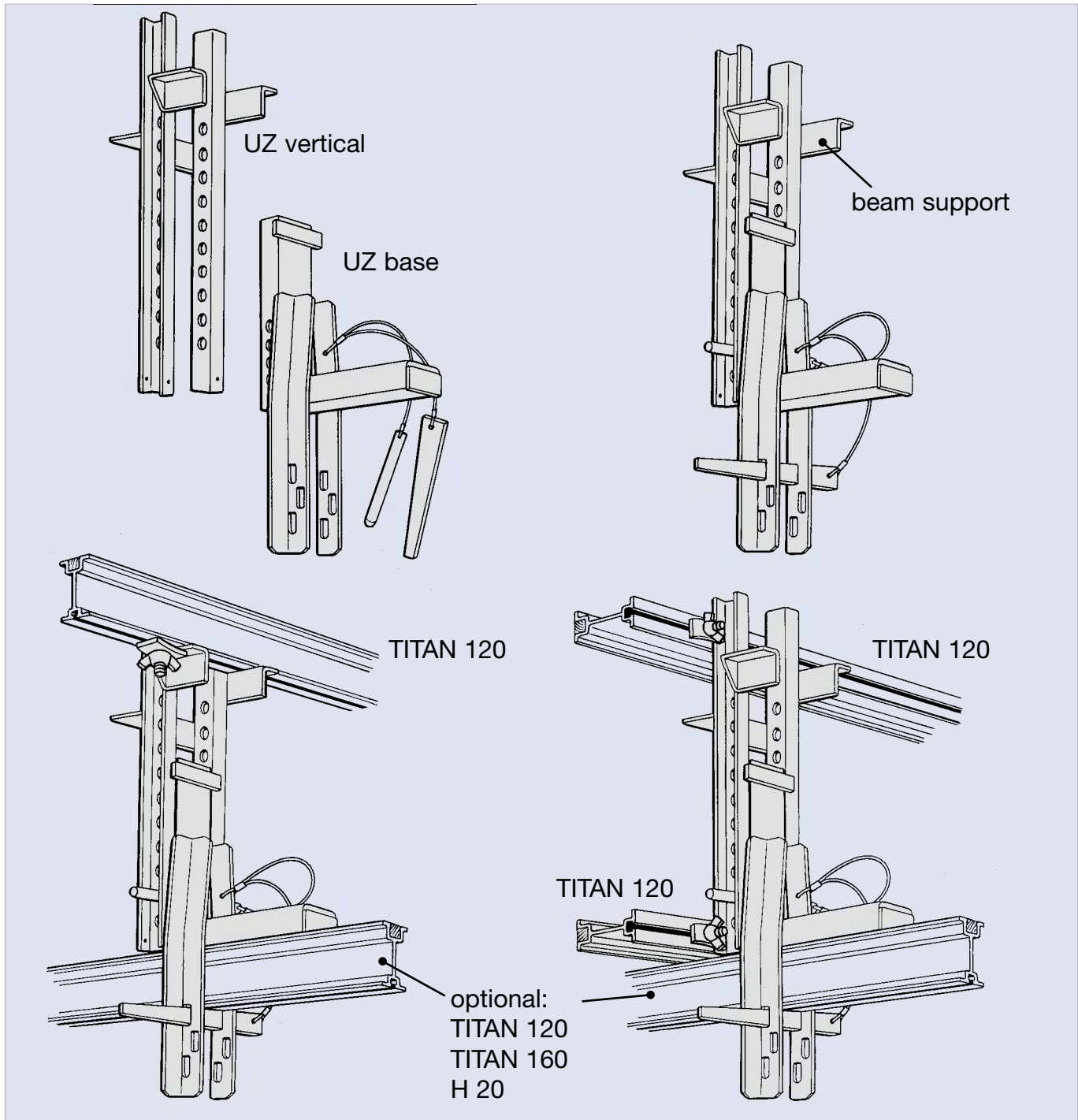
| concrete height | spacing UZ |
|-----------------|------------|
| 0,4 m           | 1,50 m     |
| 0,5 m           | 1,50 m     |
| 0,6 m           | 0,90 m     |
| 0,7 m           | 0,58 m     |
| 0,8 m           | 0,40 m     |
| 0,9 m           | 0,30 m     |

(concrete height = height of the concrete beam and slab thickness)

weight UZ vertical: 6 kg  
weight UZ base: 6 kg



TITAN UZ Beam Form with Aluminium Beam TITAN 120



DIN EN ISO 9001



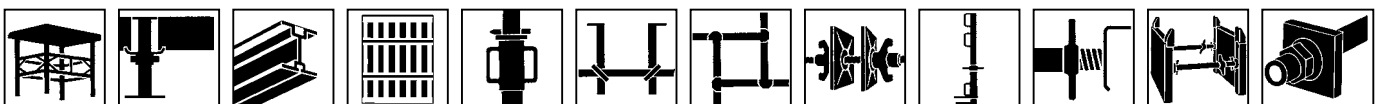
DIN EN ISO 9001 / 2000  
Zertifiziert durch DVS ZERT® e.V.  
Registrierungsnummer DE-96-010

**ISCHEBECK**® . . . technically advanced formwork, shoring,  
trenching and geotechnical systems

FRIEDR. ISCHEBECK GMBH · P.O. Box 13 41 · DE-58242 ENNEPETAL · GERMANY

☎ + 49 - 2333 - 8305-0 · FAX + 49 - 2333 - 8305-55 · E-MAIL: export@ischebeck.de · INTERNET: www.ischebeck.com

principal office Ennepetal · register court Hagen HRB 5585 · VAT Id.No.: DE811161225 · joint managing directors: Dipl.-Ing. Ernst Friedrich Ischebeck, Friedrich Döpp, Dipl. Wi.-Ing. Björn Ischebeck



Megashore HV-System Slabforming System Wallform Props Beam Forms Column Forms Formwork Ties Rail Posts Struts Trenching Systems Geotechnical System