



**ISCHEBECK**<sup>®</sup>  
**TITAN**

## **TITAN** Aluminium Beam Wallform

designed for large wall areas

→ advantages:

- can be universally combined with other formwork systems already available
- more economic than other wallform systems



**The ALU Beam Wallform TITAN cuts-down wages and increases productivity**

**1. 1/3 less anchors**

approx. 2,3 m<sup>3</sup> per anchor instead of 1,5 m<sup>2</sup> when using conventional formwork.

**2. 1/3 lighter**

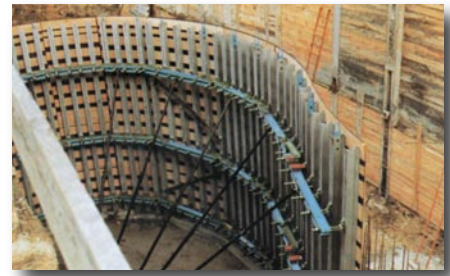
The complete formwork including plywood, access brackets and push-pull props has a weight of 45 kg/m<sup>2</sup> only. Which is approx. 50% of the weight of conventional wallform. That means you can crane double the material in one lift than before.

**3. 1/3 less push-pull props**

The horizontal position of the aluminium beams increases the stiffness of the formwork and minimizes the time required for positioning and adjusting.

**4. Light-weight components**

facilitate the basic assembly without crane. The aluminium beam TITAN 160 weights 5.6 kg per linear meter only.



DIN EN ISO 9001



**ISCHEBECK**® . . . technically advanced formwork, shoring, trenching and geotechnical systems

FRIEDR. ISCHEBECK GMBH · P.O. Box 13 41 · DE-58242 ENNEPETAL · GERMANY  
 ☎ + 49 - 2333 - 83 05-0 · FAX + 49 - 2333 - 83 05-55 · E-MAIL: export@ischebeck.de · INTERNET: www.ischebeck.com  
 principal office Ennepetal · register court Hagen HRB 5585 · VAT Id.No.: DE811161225 · joint managing directors: Dipl.-Ing. Ernst Friedrich Ischebeck, Friedrich Döpp, Dipl. Wi.-Ing. Björn Ischebeck

